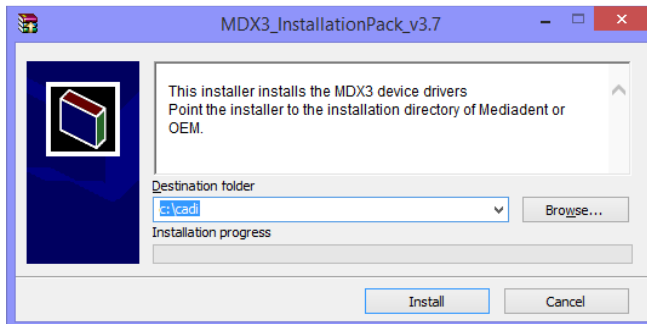


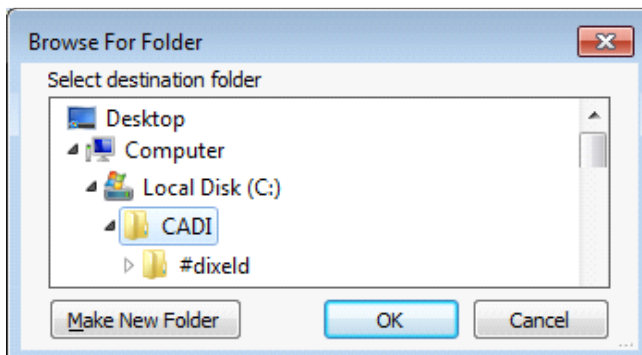
## Installation of Optimum Sensor 2019

**Make sure that CADI is installed and ready to use. Find the file "MDX3\_InstallationPack\_v3.7 - Cadi.exe" and double-click on it.**  
*(Images size has been modified for space purpose)*



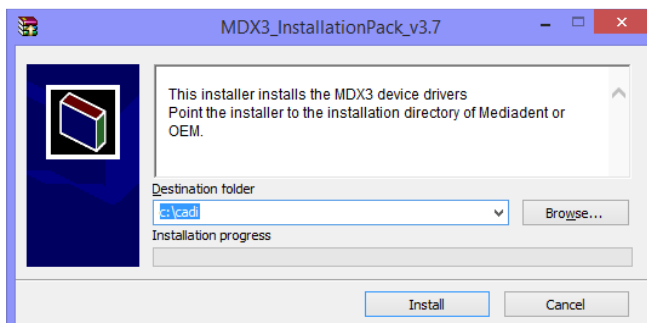
This is the first screen you will see. You need to point to your CADI folder on the local disk.

Click on "**Browse**"



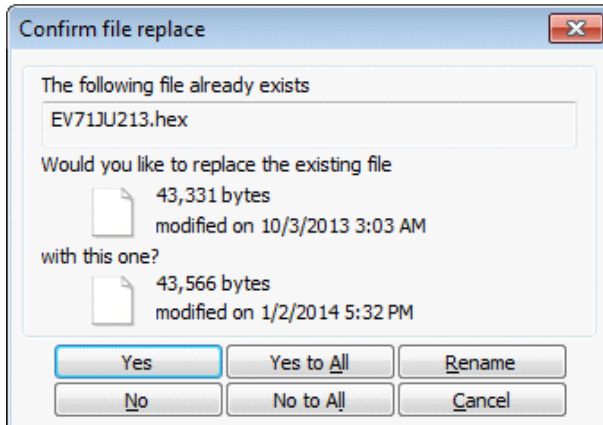
In that window, locate your CADI installation on the local disk and highlight it by selecting the folder.

Then click on "**OK**"



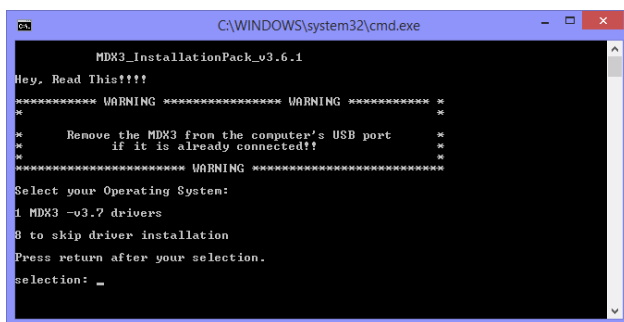
Back to the installation window, the path you have just chosen must be written in the field "**Destination folder**".

When the path is correct, click on the "**Install**" button.



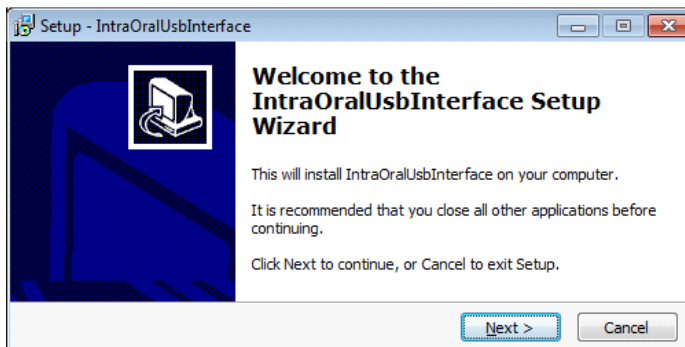
You might get a window like this one if some files are already loaded on the PC.

Simply click on "**Yes to All**".



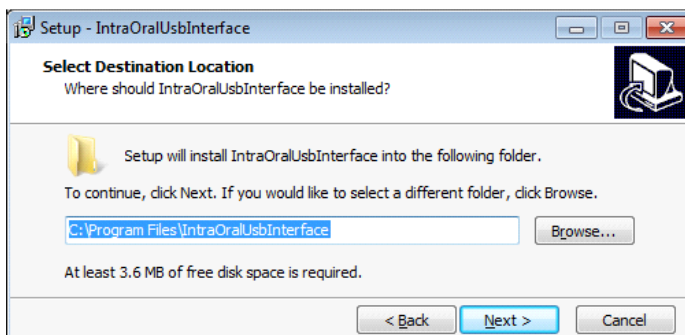
You will see a "**DOS**" window, like the one on the left.

You can read what it says or just press "**1**" on the keyboard and then press the "**Enter**" key.

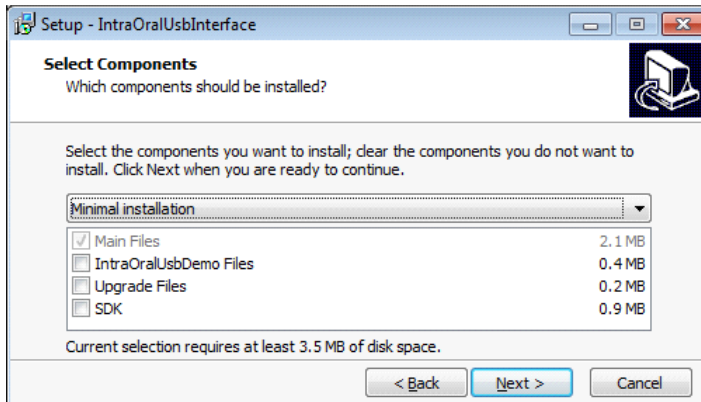


The installation window will appear. (The "**DOS**" window will stay in the back, **DO NOT** close that window.)

In the setup window, click on "**Next >**"

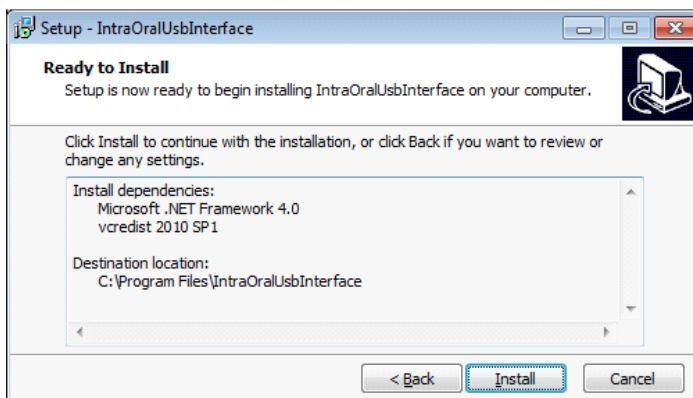


Don't change anything, just click on the "**Next >**" button.

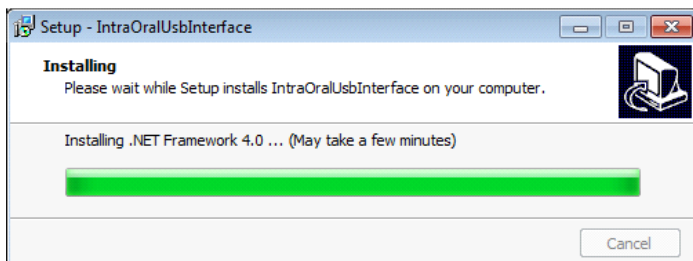


On this window, choose the “**Minimal installation**” from the drop down arrow list. The only selection in the rectangle should be “**Main Files**”.

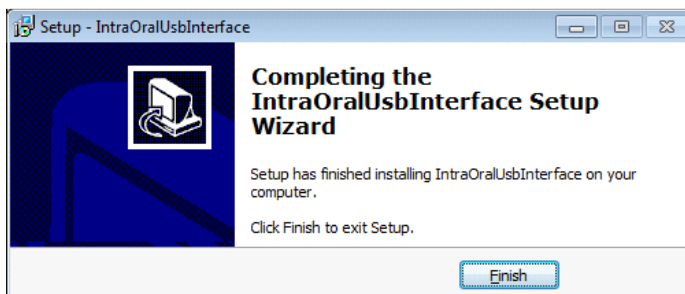
When ready click on “**Next >**”.



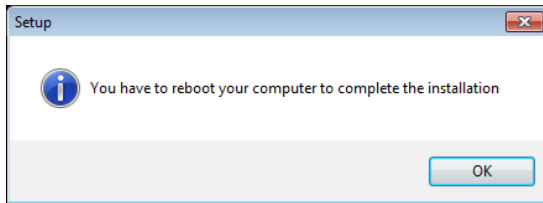
Click on “**I**nstall”.



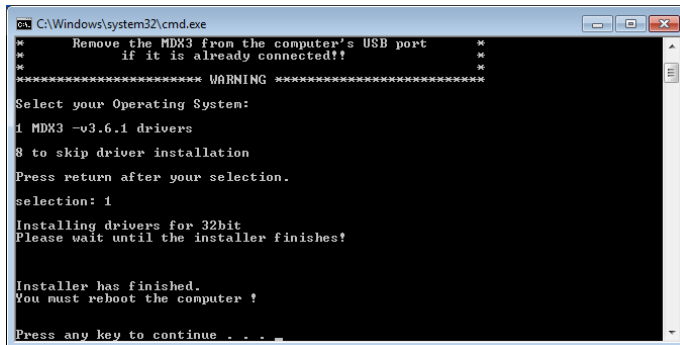
Just let this go.



Click on “**F**inish”



Click on **“OK”**.



For this window, simply press any key on the keyboard to close it.

After installing CADI you must do a simple operation to calibrate the Optimum Sensor in CADI.

Insert the Calibration CD into your CD ROM/DVD ROM Drive.

Simply copy the content of the CD (1 or 3 files) and paste it/them on the CADI folder (C:\CADI).

Now **RESTART YOUR PC**.

## Configuration of CADI Optimum within CADI



- In CADI, on the top menu, click "**Options**" then "**Setup**"
- In the modules list on the left, click the "**X-Ray MDX**" module
- Click the tab "**EV71 (CMOS)**"
- The "**Timeout (s)**" should already be on 120s.
- "**Filter script**": should be set to "**2**" already.
- There should be a check mark in the choice "**Auto Select Sensor**"
- Click the "**Save Changes**" button and "**Exit**"
- You are ready to use the CADI Optimum sensor.



This is at the bottom of the acquisition screen; it is the exposure bar. Notice the scale going blue to red.



When in the middle it means a good exposure. Going toward the BLUE is UNDER exposed while going toward the RED is OVER exposed

For assistance or information call CADI support.