

## Quick Start Guide Optiview 2 Camera



**1** - This is the CAPTURE button; to capture images.

**2** - This is the FOCUS button; you can use this to go from AUTO to SEMI mode by holding the button.

**3-4** - The sides buttons are to move to next frame

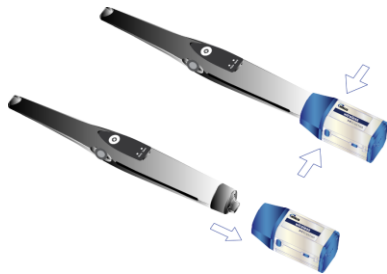
When holding down the FOCUS button (**2**), the mode will change from "Auto" to "Semi", the light will indicate the chosen mode.

Once in the "Semi" mode, the FOCUS button can be used to adjust your focus.



This is the camera holder. When you place the camera in this holder, the light automatically turns OFF. When picking up the camera, it automatically turns ON.

On the wireless camera, the buttons are exactly the same. Refer to the top section for buttons description.



To remove the wireless pack, press the buttons on both sides of the pack and pull down to remove it from the camera. Be careful and gentle in order to preserve your wireless pack in working order.

After each usage, place the camera with the wireless pack on the docking system so that it charges the camera.

If you know that you will not use the camera for a long time, you can turn off the wireless pack and leave it on so that it continues to charge.

For assistance or information call CADI support.